



ALFA ROMEO FACILITY GRAPHICS
iMBRANDED.COM

experience  EXCELLENCE



 **BRANDED**

Compliant Alfa Romeo facilities consist of the following graphic branding:

- A. Sales Office Graphics (40"w x 23.5")
- B. Heritage Lounge Collage
- C. Service Area Graphics (94"w x 36"h) or (68"w x 36"h)
- D. Delivery Area Graphics (40"w x 23.5")
- E. Display Areas - *if applicable* (78"w x 23.5"h)

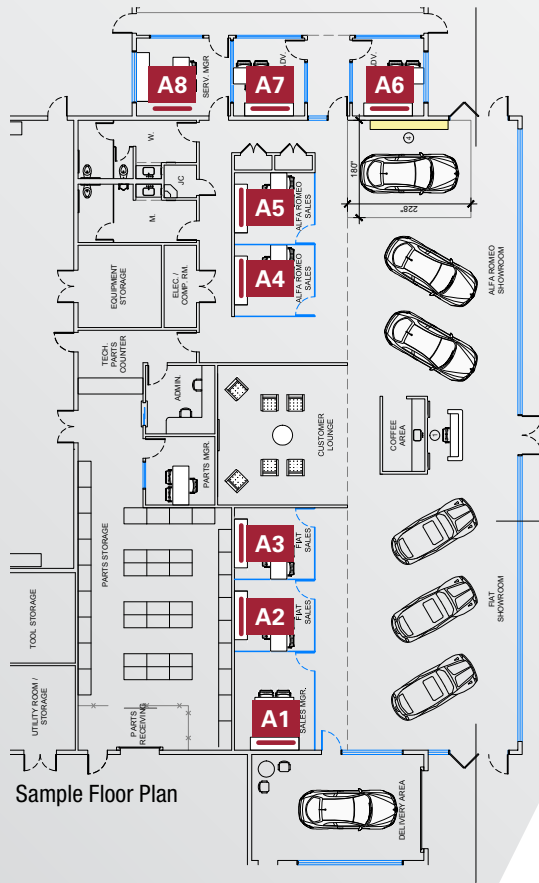


EXPERIENCE THE POWER OF BRANDING



iMBRANDED

A. Sales Office Graphics



- Sales office graphics are high-gloss, dye-sublimated prints with brand black edge-banding
- Each customer facing office is to have one graphic at minimum
- Size: 40"w x 23.5"h
- Mount: Cleat

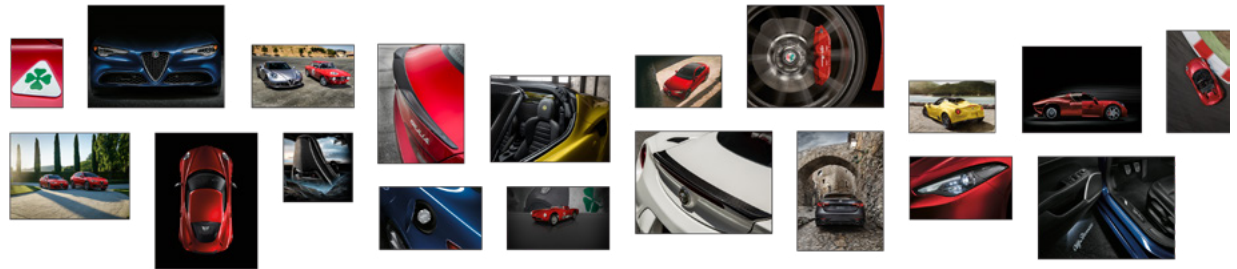
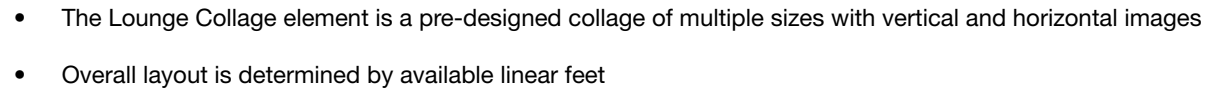


Note: Images shown are for reference only

EXPERIENCE THE POWER OF BRANDING



iMBRANDED

[illegible]

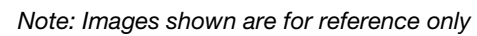
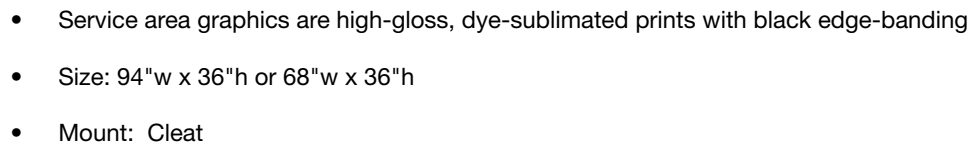
EXPERIENCE THE POWER OF BRANDING

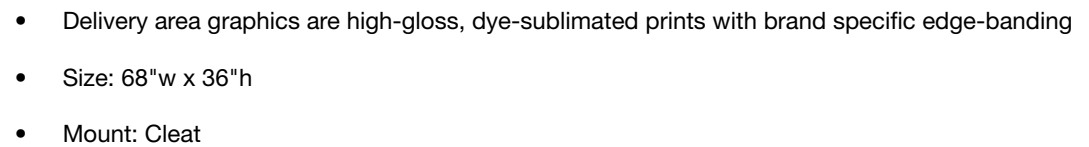


A detailed floor plan of a mobile service unit, oriented horizontally. The plan is divided into several functional areas:

- Left End (Wash Bay):** A large rectangular area labeled "WASH BAY" with a diagonal hatch pattern.
- Top Left (Air Comp / Storage):** A room labeled "AIR COMP. / STORAGE" containing a large circular fan symbol.
- Top Center (Lunchroom):** A room labeled "LUNCH ROOM" with a circular table and four chairs.
- Top Right (Utility Rooms):** Two rooms labeled "UTILITY ROOM / STORAGE".
- Center (Main Service Area):**
 - A large open area labeled "SERVICE WORKSHOP (NOTE: MINIMUM CLEAR CEILING HEIGHT IS 16'0")".
 - Along the top wall of this area are three service bays labeled "C1", "C2", and "C3". Each bay has a car icon and a "SERV. ADR." (Service Address) label.
 - Along the bottom wall of this area are three service bays labeled "C4", "C5", and "C6". Each bay has a car icon and a "SERV. ADR." label.
 - Between the workshop and the bottom bays are several smaller rooms: "EQUIPMENT STORAGE", "ELEC. / COMP. RM.", "TOOL STORAGE", "PARTS STORAGE", "PARTS INTR.", "PARTS REPAIR", "PARTS RECEIVING", and "ADMIN.". There are also restrooms labeled "M" (Men) and "W" (Women).
- Right End (Drive Lane):** A narrow area labeled "DRIVE LANE" with a car icon and a "C1" label.

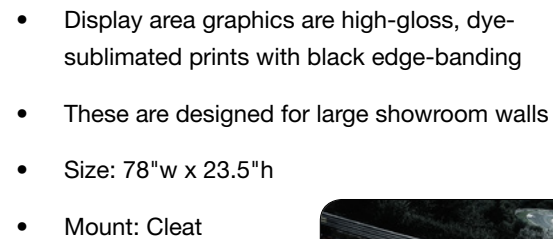
The plan includes various dimensions and notes, such as "MINIMUM STALL WIDTH FOR SERVICE VEHICLES 14'-0\"", "MINIMUM STALL WIDTH FOR SERVICE VEHICLES 14'-0\"", and "MINIMUM STALL WIDTH FOR SERVICE VEHICLES 14'-0\"". It also shows a "WASH BAY" and a "DRIVE LANE".



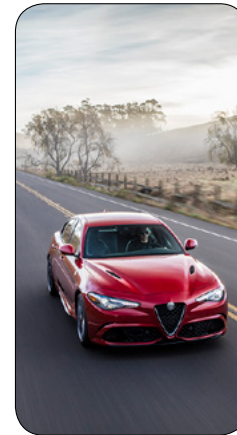
[illegible]

EXPERIENCE THE POWER OF BRANDING



[illegible]

Note: Images shown are for reference only



- Vertical options available for large areas in display areas or service areas
- Graphics are high-gloss, dye-sublimated prints with black edge-banding
- Size: 42"w x 78"h
- Mount: Cleat

Note: Images shown are for reference only



Ordering Your Graphics

i.M. Branded is happy to assist you with branding your Alfa Romeo facility. We will provide a customized layout with suggested images along with an itemized proposal and quote for installation if requested.

Please complete the form below and return the document along with a PDF of your floorplan to Jereme Brown at jbrown@imbranded.com. We will contact you within one business day to review project specifics and any special requests.

Dealership Name:		Dealer Code:	Target Completion Date:	
Primary Contact Name:		Primary Contact Phone:	Primary Contact Email:	
Site Contact Name:		Site Contact Phone:	Site Contact Email:	
Dealership Address:		City:	State:	Zip Code:
Architect or GC Contact Name:		Architect or GC Contact Phone:		

Installation Required? Yes No

Contact Us

Jereme Brown
Account Manager
Phone: 734.320.4215
jbrown@imbranded.com

i.M. Branded
2020 Ring Road
Pontiac, MI 48341
www.imbranded.com

Toll Free: 866.717.4467
Main: 248.537.8500
Fax: 248.577.0571



EXPERIENCE THE POWER OF BRANDING



ALFA ROMEO FACILITY GRAPHICS